

# PROCENTEC

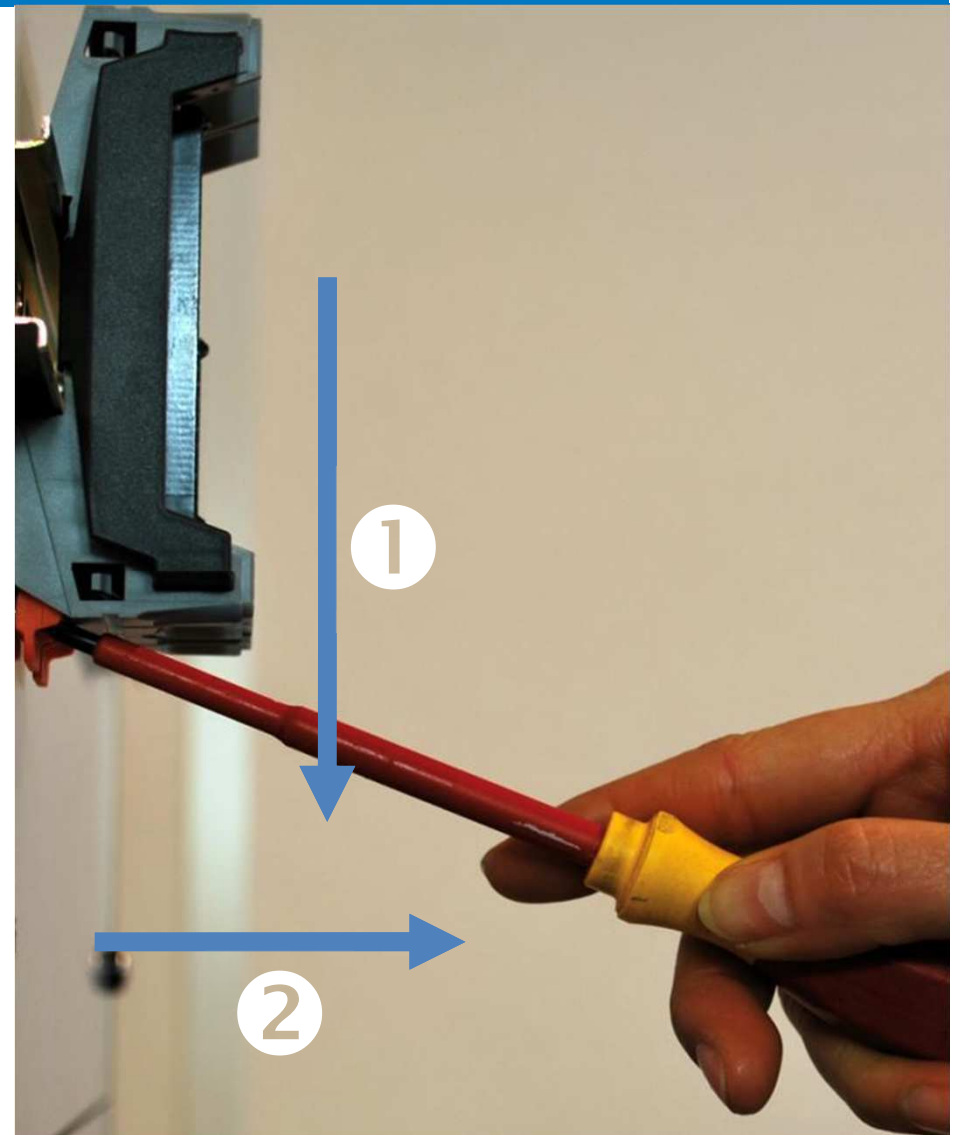
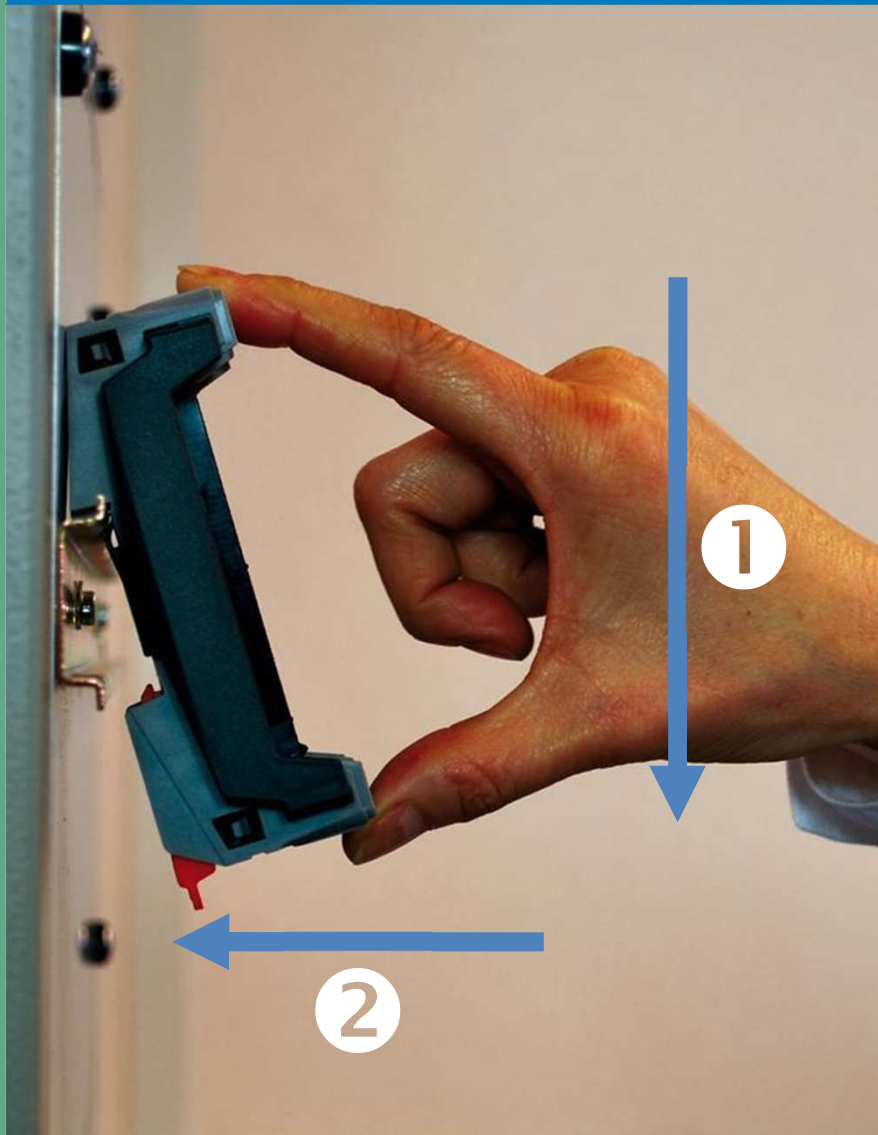
Die PROFIBUS und PROFINET Spezialisten



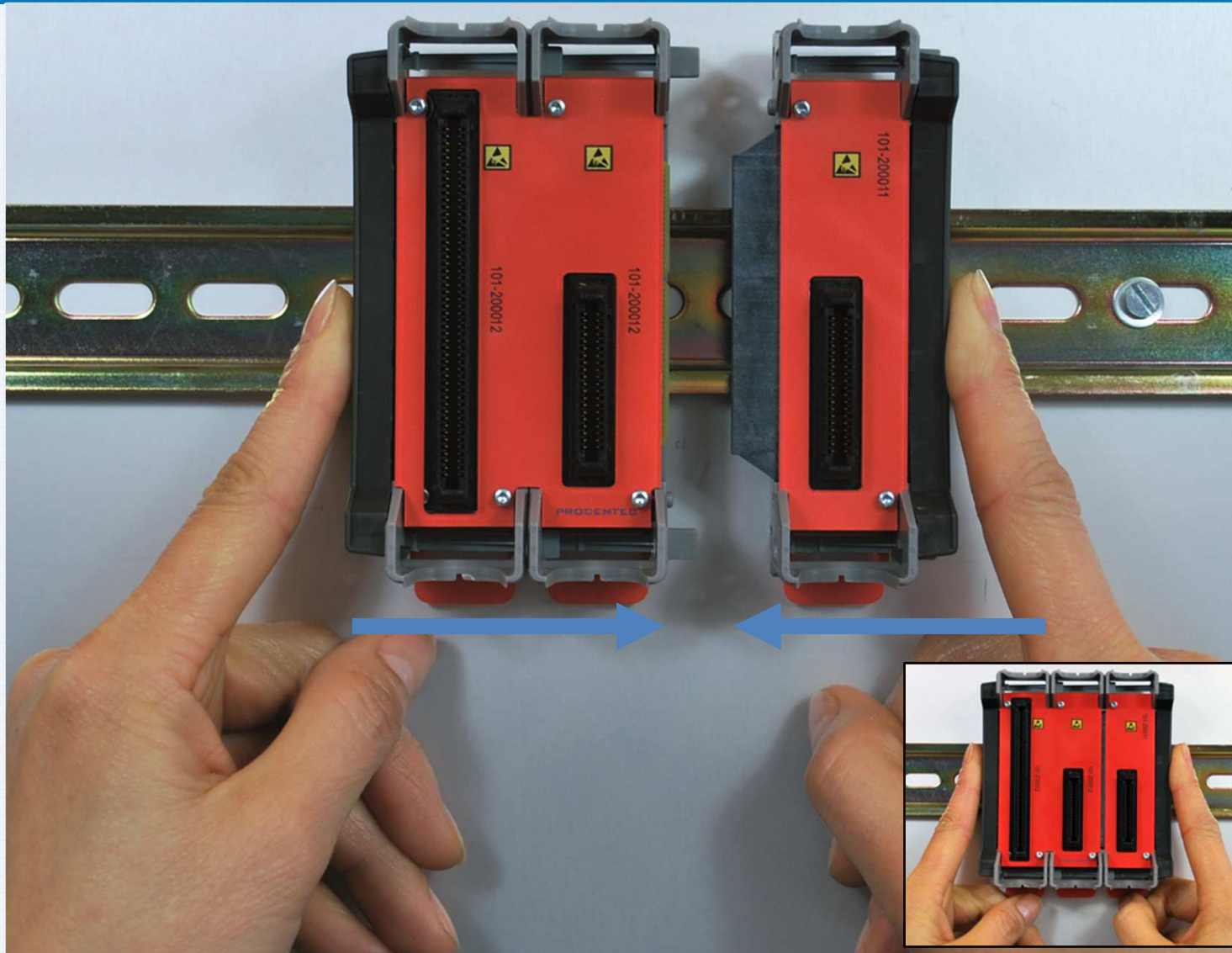
**COMbricks**  
PROFI PROFII  
BUS NET

COMbricks – Installation

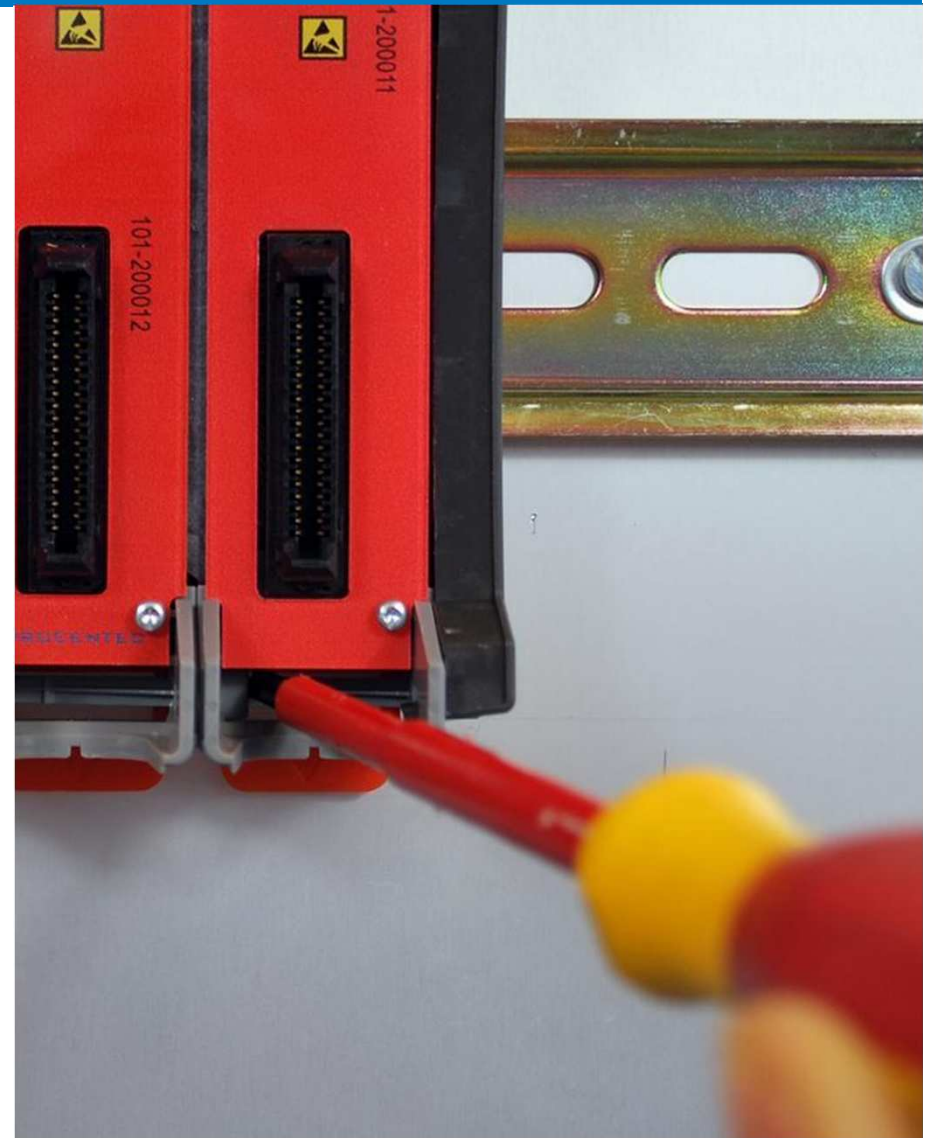
# (De-) Montage der Backplane



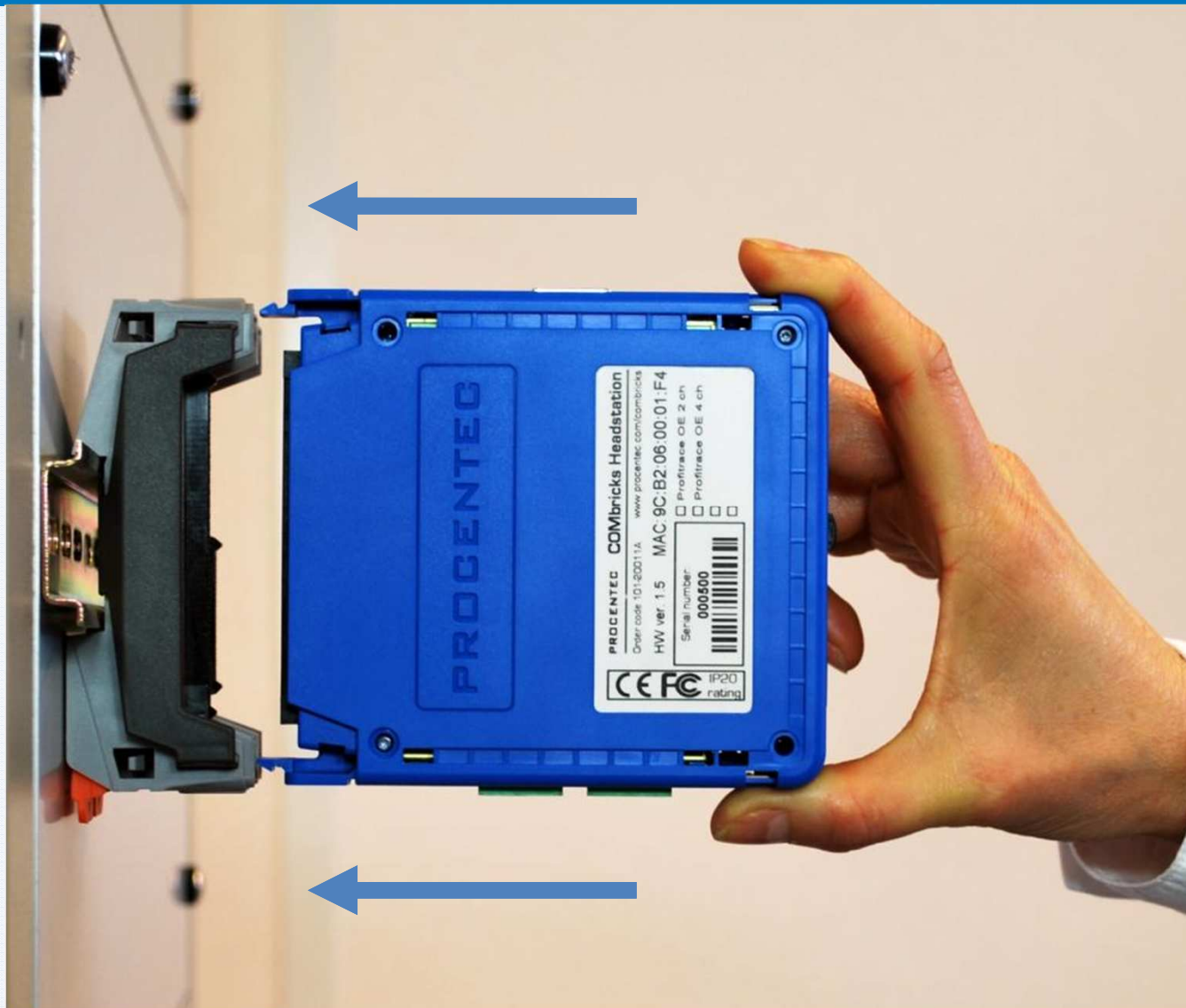
# Backplane-Einheiten hinzufügen



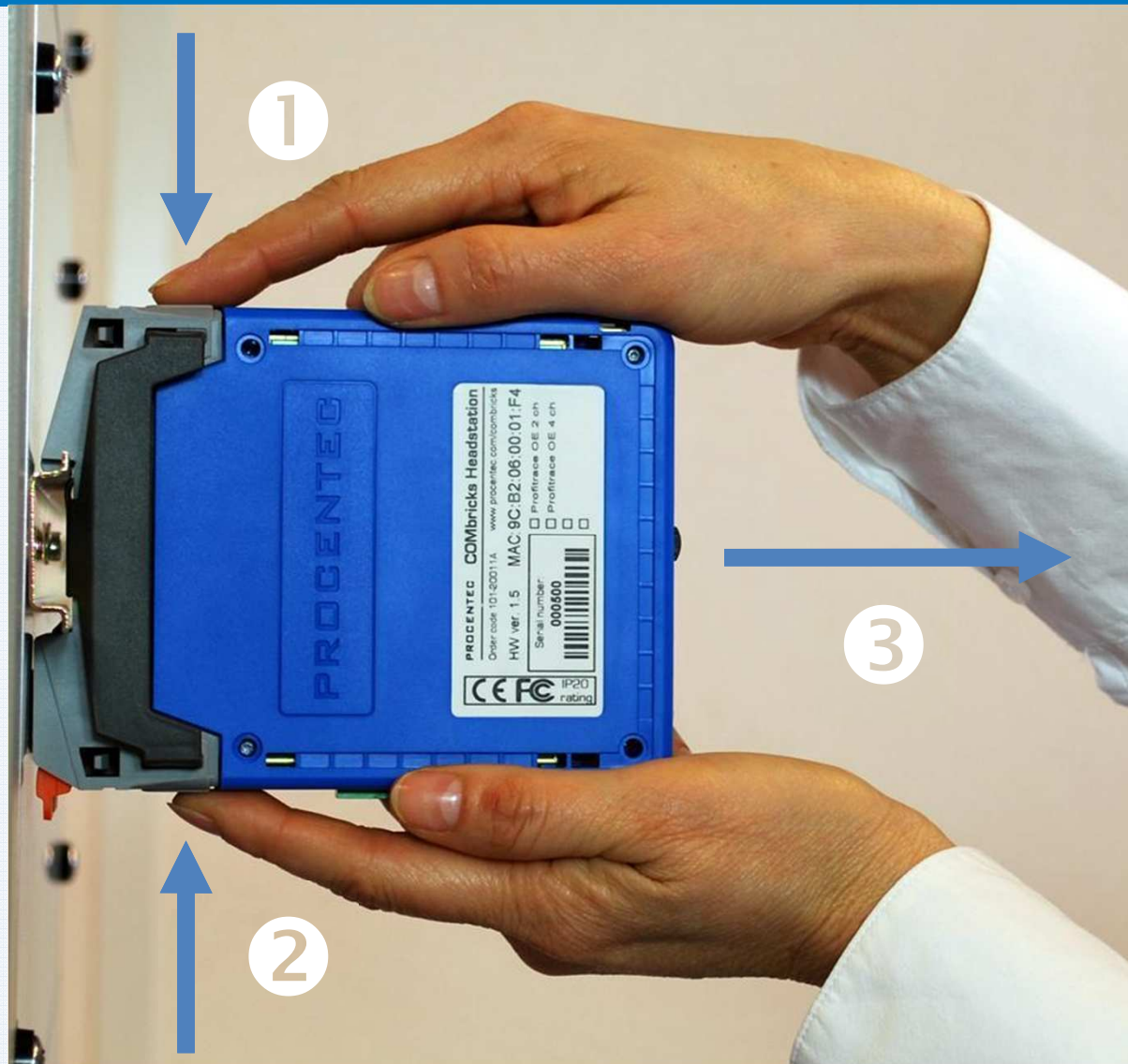
# Backplane-Einheiten demontieren



# Module einsetzen



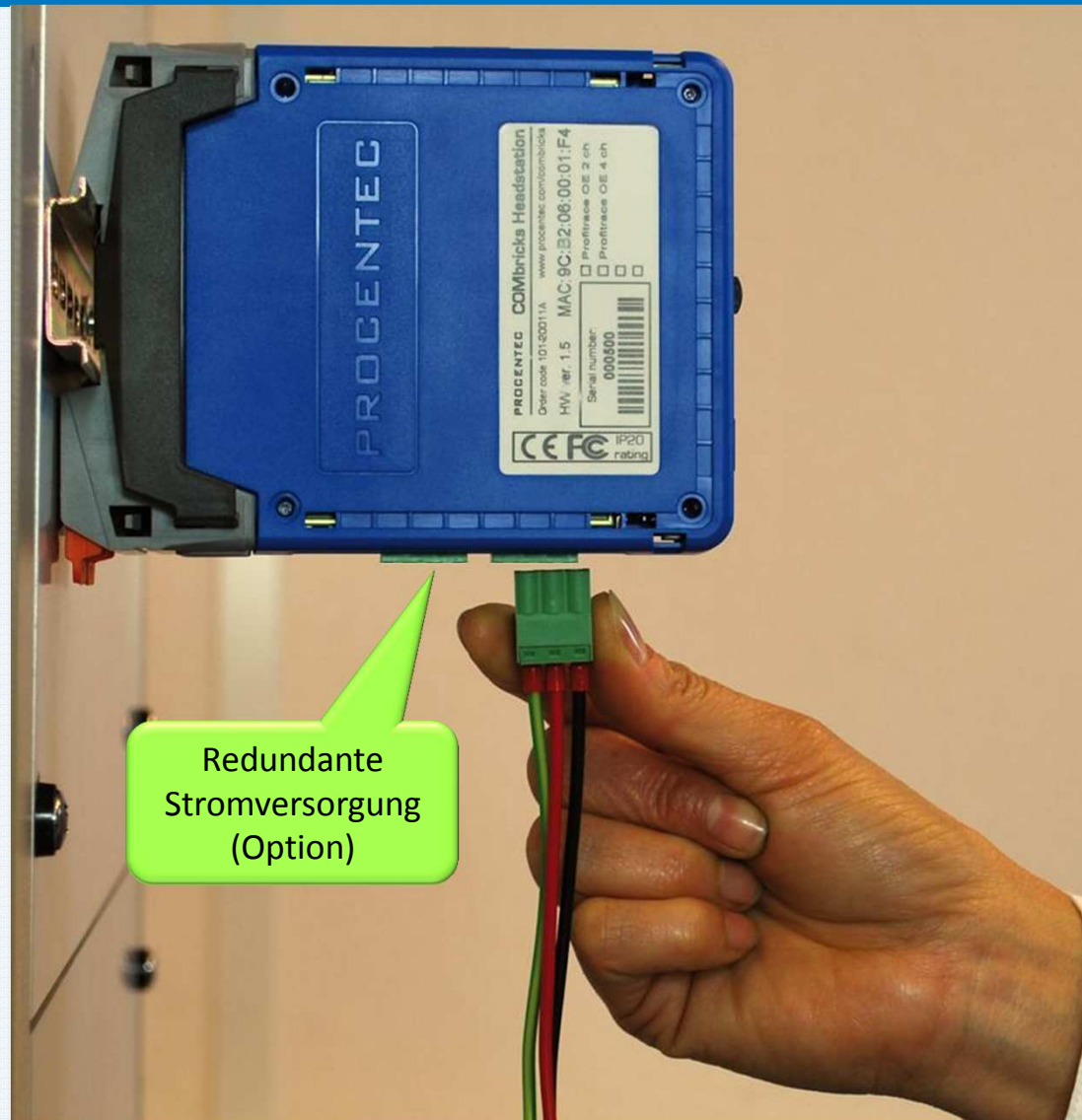
# Module entnehmen



# Ethernet-Verkabelung



# Stromversorgung der Kopfstation



Redundante  
Stromversorgung  
(Option)

# „Discovery Tool“

Suchlauf- und Konfigurierungsfunktionen

Station type	Serial number	Sw rev.	Hw rev.	MAC address	IP address	Uptime
COMbricks Head Station Type 1	2010370001	V0.103b	V1.0	9C:B2:06:00:00:01	192.168.1.231	
COMbricks Head Station Type 1C	000060	V1.237	V1.5	0C:B2:06:00:00:3C	192.168.1.225	0 days, 5:09:06
COMbricks Head Station Type 1	000069	V1.238	V1.5	0C:B2:06:00:00:45	192.168.1.238	0 days, 2:31:40
COMbricks Head Station Type 1	000080	V1.221	V1.5	9C:B2:06:00:00:50	192.168.1.253	1 days, 1:34:56

Kopfstationen

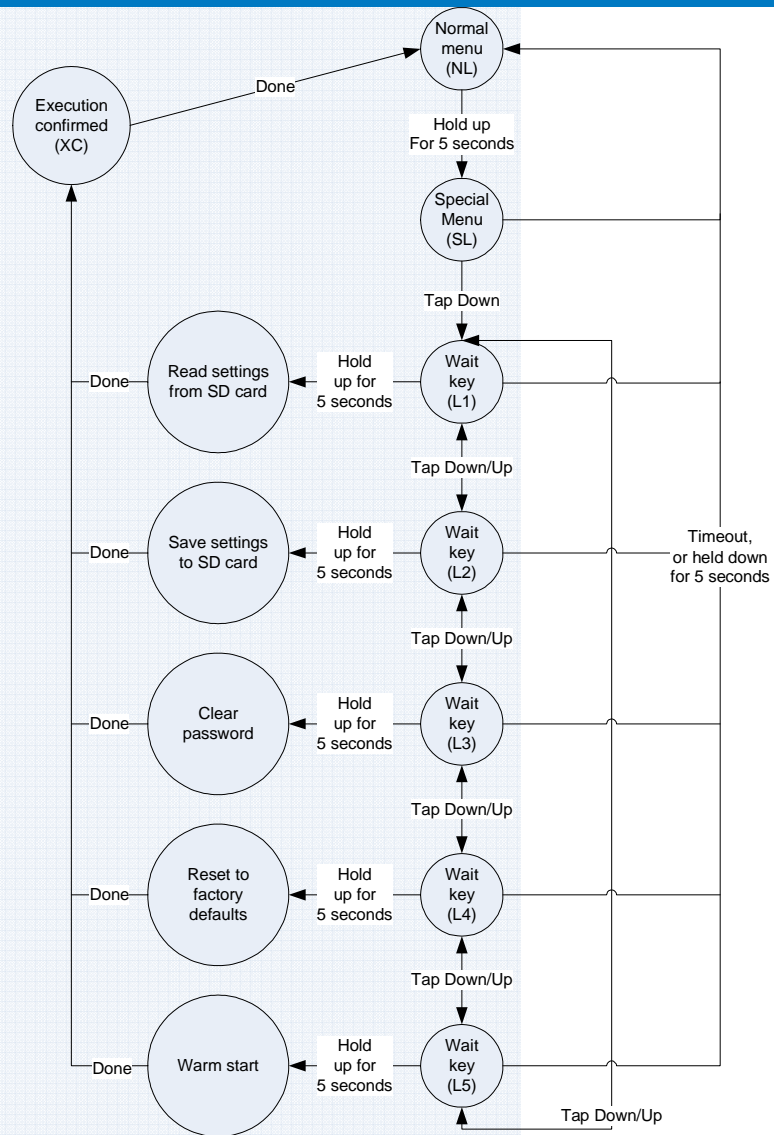
MAC- und IP-Adressen

4 devices found.

# Menü-Schalter



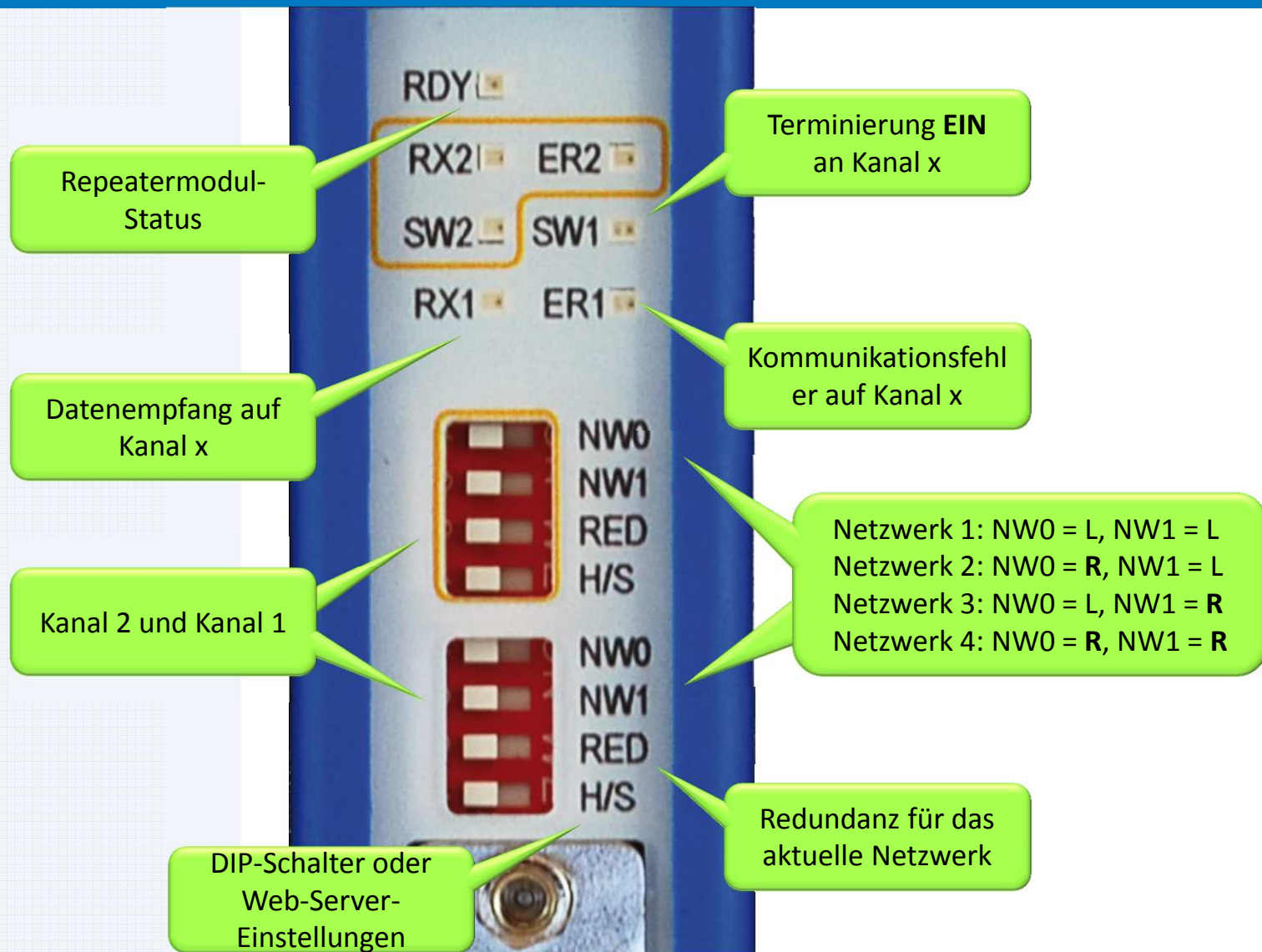
# Menü der Kopfstation



## LED-Anzeigen

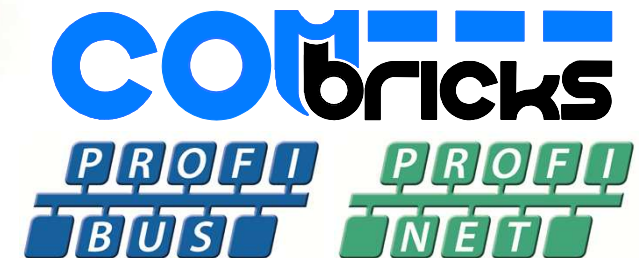
SL	Alle LEDs blinken
L1	RDY blinkt
L2	ETH blinkt
L3	SF blinkt
L4	IOF blinkt
L5	USB blinkt
XC	Lauflichtanzeige aller LEDs

# Repeater-Schalter und -LEDs



# PROCENTEC

Die PROFIBUS und PROFINET Spezialisten



COMbricks – Installation